

## South Ketapang Landscape Initiative

### Current Progress

#### 2019

The 12-month first phase of the program was successfully completed in December 2019. During that time, the initiative enhanced the internal capacity of PT.SNA to manage and continue the landscape activities over the next 2-3 years, especially on the sub-landscape level. To achieve the landscape level goals, PT.SNA will continue working with the BKSDA, Ketapang Regency, relevant government agencies, and also other jurisdictional and landscape initiatives such as IDH's Production, Protection and Inclusion (PPI) Compact, which is being currently implemented in the Ketapang Regency.

#### First Year Results at a Sub-Landscape Level

- Rapid assessment of current land use as well as community challenges and aspirations, which was conducted for a pilot group of villages.
- Development of land-use maps for the pilot group of villages (Please see Figure 1, Figure 2 and Figure 3).
- Sensitization sessions and joint fire drills with the neighbouring villages.
- Joint fire-fighting action on the adjacent land during the 2019 dry season.
- Sharing of the sub-landscape experience with other stakeholders on a landscape level at the year-end Multi-stakeholder Forum in Ketapang City.

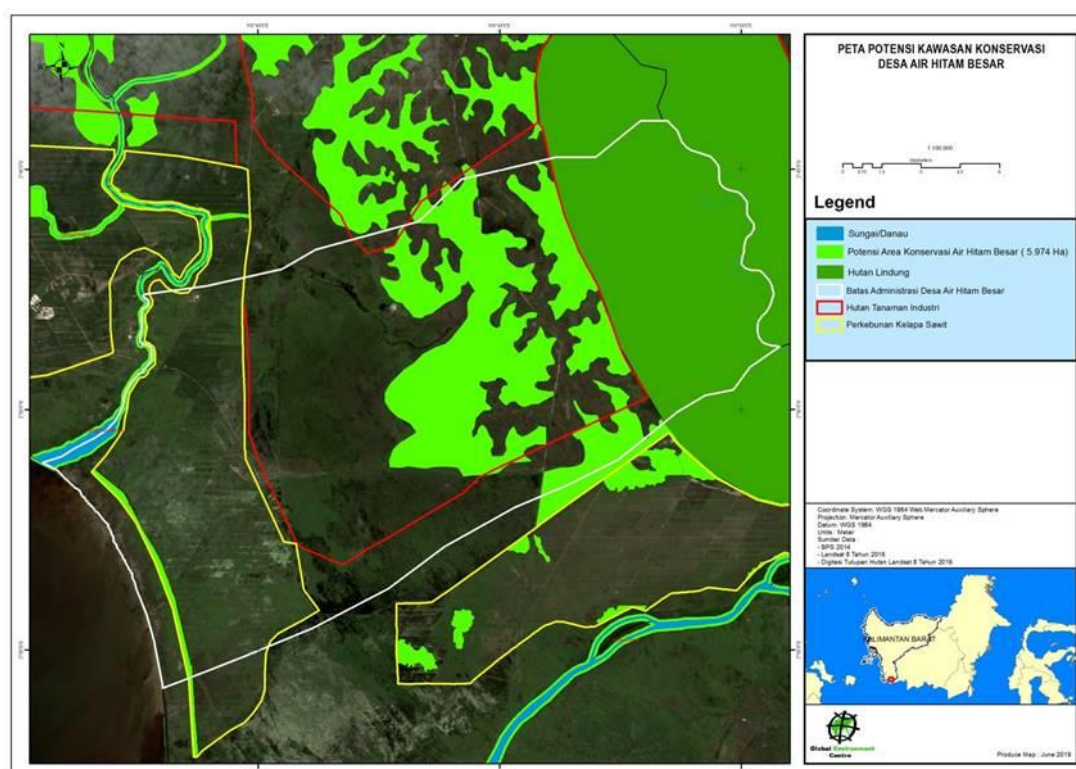


Figure 1: Land-use map for Desa Air Hitam Besar

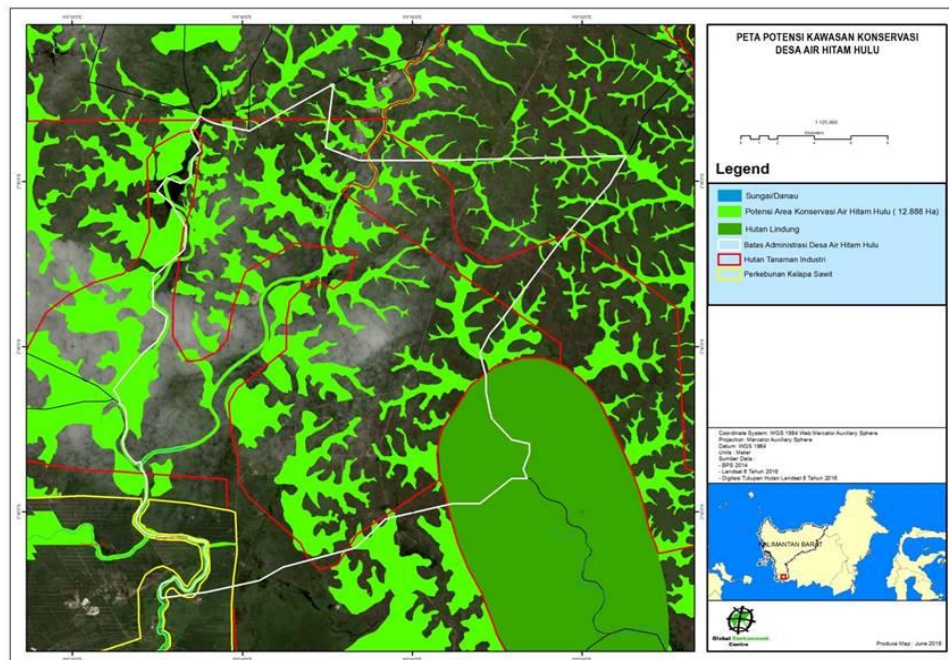


Figure 2: Land-use map for Desa Air Hitam Hulu

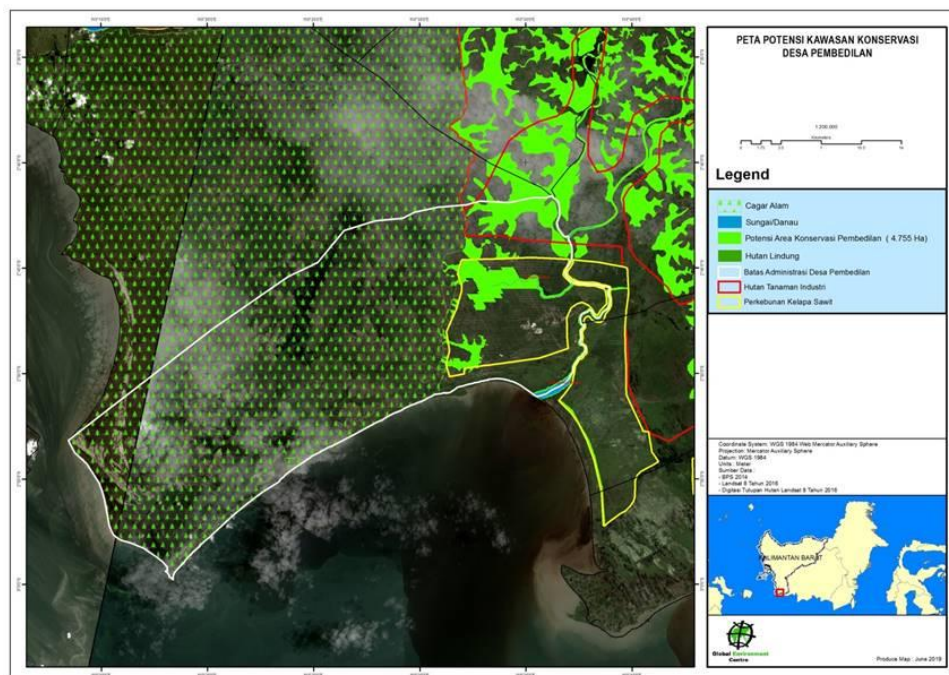


Figure 3: Land-use map for Desa Pembedilan

## First Year Results at a Landscape Level

- Multi-stakeholder workshop to finalize a shared vision and to establish 3 working groups: Conservation, Village Development, and Fire Prevention & Control.
- Multi-stakeholder Forum, chaired by Ketapang Regency's Bupati, with over 100 participants representing local government and its agencies, companies, communities, and NGOs, at which the three working groups shared their experiences and presented their recommendation for further action. Forum's results and conclusions were broadly covered by several local and national media.
- Conservation areas interconnectivity map produced based on the input of the plantation companies operating within the landscape (Please see Figure 4).



- Weather and fire hazard maps and alerts produced by GEC and shared among the stakeholders (Please see Figure 5).

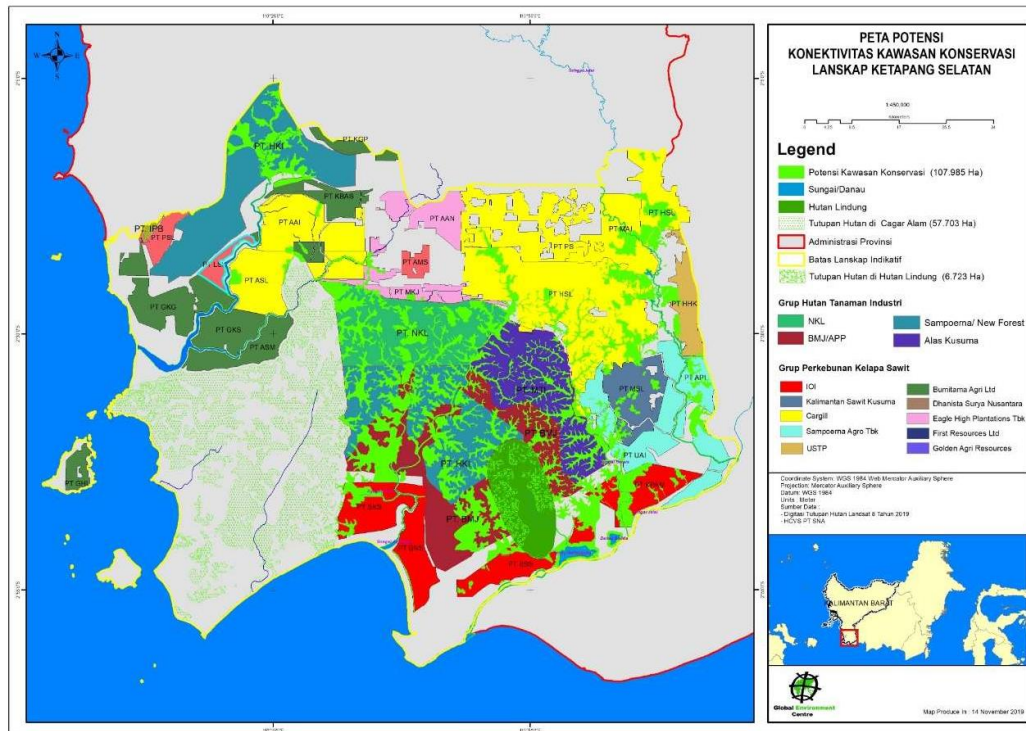


Figure 4: Conservation areas interconnectivity map in South Ketapang Landscape

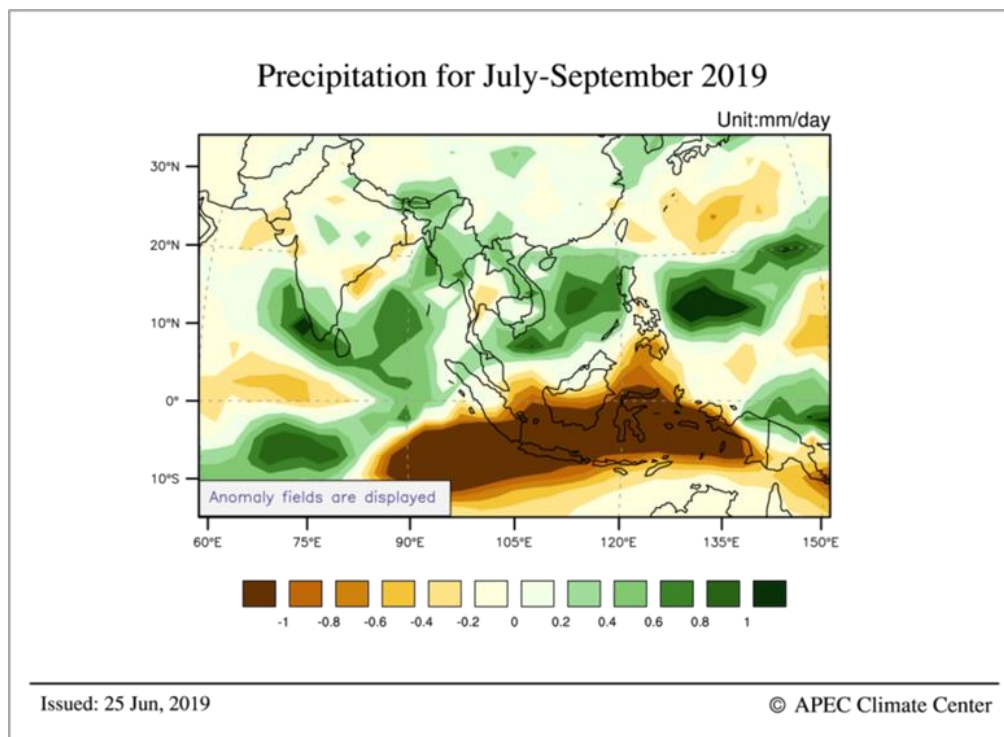


Figure 5: Rainfall anomalies for Southern Asia issued on 25 June 2019 by the APEC Climate Centre (APCC)

Due to the coronavirus outbreak, PT.SNA, guided by the IOI Group's Stakeholder Engagement Team, will lead the project activities and will have to rely on its own resources to minimize travel and involvement of outside consultants. It will continue to work with the neighbouring villages, tree plantation companies, and government agencies on: a) preservation of the conservation areas, b) village development, and c) fire prevention and control.

## Current Year Activities – Sub-Landscape Level

### 1. Conservation

- PT.SNA is finalizing an extension of the MOU with BKSDA for another 5 years with a focus on protection of the part of Cagar Alam Muara Kendawangan that is adjacent to PT.SKS, one of the four concessions under PT.SNA, along with PT.BNS, PT.BSS and PT.KPAM. Local villages are an integral part of this effort. Planned activities include community training and awareness building, mapping of the protected area, and joint patrolling.
- PT.SNA is protecting 4,600 ha of conservation areas located in the vicinity by conducting regular patrolling. Conservation areas interconnectivity map produced based on the input of the plantation companies operating within the landscape (Please see Figure 4).
- PT.SNA began a rehabilitation work on 20 ha of peatland located outside of PT.KPAM by planting indigenous Rengas Manuk forest tree species.

### 2. Village Development

- Assistance in legalization of 960 ha of land under TORA









PT.BNS together with a neighbouring tree plantation BMJ and Air Hitam Besar village agreed to work on and jointly apply for a legalization of 960 ha of land adjacent to BNS's eastern boundary and located within the BMJ concession. The legalization process will be conducted under the framework of TORA (Tanah Objek Reforma Agraria) and will make it possible for 192 households to acquire ownership rights to that land. Once this is done, PT.BNS will establish a joint venture with the farmers and assist them with the maintenance and harvesting of oil palm. BMJ will too create a joint venture with the Air Hitam Besar community and assist them with planting forest species.







- Pilot farming projects

In the summer of 2020, PT.SNA launched several pilot farming projects with the villages nearby. The purpose is twofold: a) to help farmers with land clearing using PT.SNA's heavy machinery, so that they don't recur to slash-and-burn technique, and b) in the long-run, to improve their livelihood, including food security, by helping them with more advanced land preparation and irrigation technique as well as with access to various inputs such as subsidized fertilizer and improved, higher-yielding variety of seeds, and the provision of extension services.

Based on the results of these pilot projects, some of them might be expanded and offered to other village groups.

List of pilot farming projects currently conducted.

PT	VILLAGE MoU SIGNED ON	FARMING / DEM PLOT SIZE (Ha)	FARMING ACTIVITY	PHOTOS
PT SKS	Air Hitam Hulu 8 Jun 2020	10	Chilli	
			Watermelon	
			Sugar cane	
			Paddy	
			Ginger	
			Corn	
			Long Beans	
			Cucumber	

PT	VILLAGE MoU SIGNED ON	FARMING / DEM PLOT SIZE (Ha)	FARMING ACTIVITY	PHOTOS
PT SKS	Pembedilan 15 Jun 2020	8.5	Cassava	
			Chilli	
			Long Beans	
			Pineapple	
PT BNS	Air Hitam Besar 12 Jun 2020	12	Fish pond	
			Paddy	
PT KPAM	Sukaramai 8 Jun 2020	5	Paddy	

### 3. Fire Prevention

In early 2020, PT.SNA, assisted by IOI HQ, developed a novel and comprehensive Fire Outbreak Preparedness Plan 2020. Based on the historical data, it has identified 7 high-risk areas and developed customized action plan for each one of them. The results of PT.SNA fire prevention and mitigation during the dry season of 2020 (May – October) have been good. Here is a summary and brief analysis:

- Total burnt area inside PT.SNA's IUP: 3.7 ha.
- The cause of fire in 15 fire incident areas:
  - a) 60% (9 cases) land clearing by villagers
  - b) 33.4% (5 cases) negligence (mainly fire caused by cigarette butts)
  - c) 6.7% (1 case) hunting activities
- Average time to put off a fire: less than 2 hours
- Number of hot spots in PT.SNA vicinity: approximately 400

Key factors contributing to a significant reduction of the fire incidents during the 2020 dry season:

- Dry season not as severe as in 2019;
- Development and effective implementation of Fire Outbreak Preparedness Plan 2020;
- Fire brigades stationing near high fire risk areas and on stand by for 24 hrs, in 3 shifts, and acting within a 3-km radius outside PT.SNA boundaries, if necessary, to prevent fire from migrating inside;
- Drones assigned to each PT to monitor the area for early hot spot detection;
- 3 additional boats acquired for patrolling river buffer zones (especially alongside Sg. Berais and Sg. Keramat);
- 8 BRIMOP officers stationing near villages for socialization and joint patrolling and action (jointly with villagers and PT.SNA team);
- Using its heavy machinery, PT.SNA cleared up to 10 ha of land per village for planting crops, thus reducing villagers' need to use the slash and burn technique.
- MOU signed and joint action with five adjacent industrial tree plantations.

### Current Year Activities – Landscape Level

On a landscape level, IOI and PT.SNA are actively participating in the development and implementation of the Production, Protection, Inclusion (PPI) Compact initiated by IDH in the Ketapang Kabupaten. IOI and PT.SNA have aligned their own South Ketapang Landscape Initiative with the targets set up by PPI Compact and have been participating in the IDH's coordination meetings conducted via the zoom platform. PT.SNA's sub - landscape activities will be contributing to the overall goals of PPI and the lessons learned will be shared across the whole landscape.